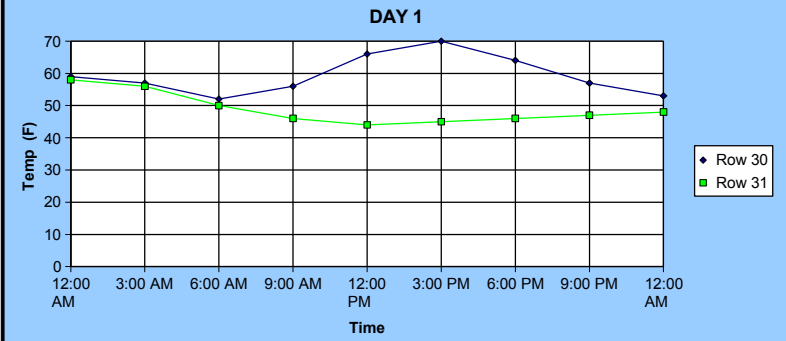


**UTILITY FORECAST FOR:** \_\_\_\_\_

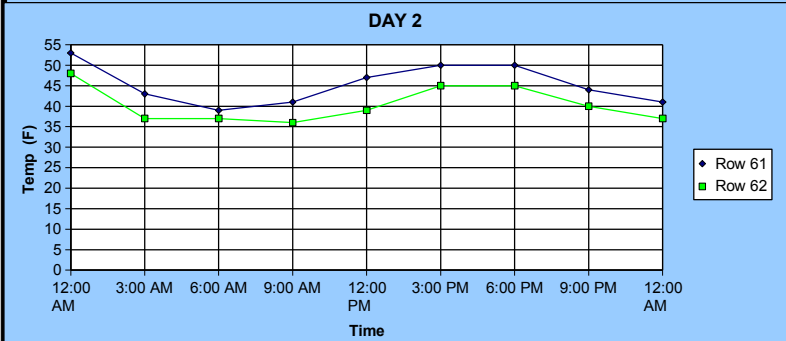
FORECAST TIME: \_\_\_\_\_ FORECAST DATE: \_\_\_\_\_ FORECASTER: \_\_\_\_\_

Short Range Summary (Day 1-3):

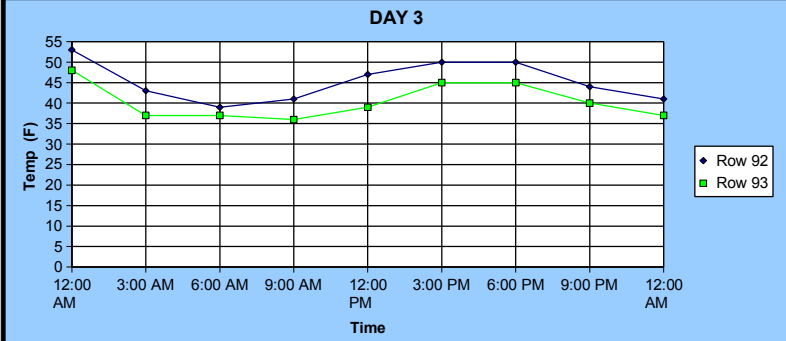
DAY 1 - DAY OF WEEK (DATE)									
Time:	12:00 AM	3:00 AM	6:00 AM	9:00 AM	12:00 PM	3:00 PM	6:00 PM	9:00 PM	12:00 AM
Temperature:	59	57	52	56	66	70	64	57	53
Dewpoint:	58	56	50	46	44	45	46	47	48
Wind Dir./Speed:	NW17G27	NW17G27	NW17G27	NW17G27	NW17G27	NW17G27	NW17G27	NW17G27	NW17G27
Precipitation Type:	-SHRA	-SHRA							
Accumulation (Inches):	.02	.01							
% Cloud Coverage:	100%	100%	70%	70%	30%	30%	30%	50%	50%
General Weather:									
Daily Low Temperature:	51 at 5:00 AM			Daily High Temperature:			72 at 4:00 PM		



DAY 2 - DAY OF WEEK (DATE)									
Time:	12:00 AM	3:00 AM	6:00 AM	9:00 AM	12:00 PM	3:00 PM	6:00 PM	9:00 PM	12:00 AM
Temperature:	53	43	39	41	47	50	50	44	41
Dewpoint:	48	37	37	36	39	45	45	40	37
Wind Dir./Speed:									
Precipitation Type:									
Accumulation (Inches):									
% Cloud Coverage:	100%	100%	70%	70%	30%	30%	30%	50%	50%
General Weather:									
Daily Low Temperature:	51 at 5:00 AM			Daily High Temperature:			72 at 4:00 PM		

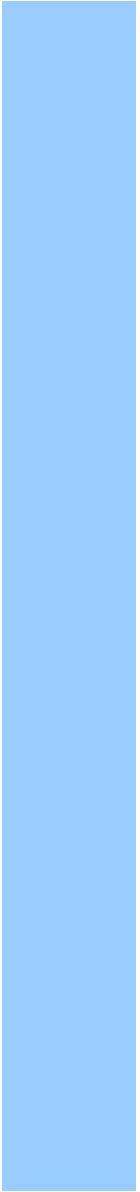


DAY 3 - DAY OF WEEK (DATE)									
Time:	12:00 AM	3:00 AM	6:00 AM	9:00 AM	12:00 PM	3:00 PM	6:00 PM	9:00 PM	12:00 AM
Temperature:	53	43	39	41	47	50	50	44	41
Dewpoint:	48	37	37	36	39	45	45	40	37
Wind Dir./Speed:									
Precipitation Type:									
Accumulation (Inches):									
% Cloud Coverage:	100%	100%	70%	70%	30%	30%	30%	50%	50%
General Weather:									
Daily Low Temperature:	51 at 5:00 AM			Daily High Temperature:			72 at 4:00 PM		



Extended Forecast								
	DAY 4		DAY 5		DAY 6		DAY 7	
	THURSDAY		FRIDAY		SATURDAY		SUNDAY	
Daily Low/High Temp:	37	54	28	56	42	52	38	59
General Weather:	General weather will be typed here		general weather will be typed here		general weather will be typed here		general weather will be typed here	
Comments:	comments section for any deviation expected in forecast ect.		comments section for any deviation expected in forecast ect.		comments section for any deviation expected in forecast ect.		comments section for any deviation expected in forecast ect.	

Long Range Summary (Day 8-14):
Long range summary will go in here. General weather trend related to normal etc.



# Severe Weather Forecast

**FORECAST VALID AS OF:** 8:00 AM Wednesday 4/3/2007

**CONTINUES UNTIL:** 1:00 PM Thursday 4/4/2007

## Severe Weather Categories:



Strong Winds	
Starting Time:	1AM-4AM THURSDAY
Ending Time:	10AM-12PM THURSDAY
Sustained Wind Speed:	25KT-40KT
Highest Potential Gusts:	45KT-50KT
Wind Direction:	Southwest
Forecast Confidence:	Moderate



Thunderstorms	
Starting Time:	1AM-4AM THURSDAY
Ending Time:	10AM-12PM THURSDAY
Worst Conditions Between:	6AM-8AM THURSDAY
Storm Weather:	Gusty Winds, Hail, Heavy Downpours
Forecast Confidence:	Low



Heavy Rain	
Starting Time:	1AM-4AM THURSDAY
Ending Time:	10AM-12PM THURSDAY
Worst Conditions Between:	6AM-8AM THURSDAY
Precipitation Amounts (in)	.80"-1.20"
Forecast Confidence:	Moderate-High

Additional Comments: