

THE NATIONAL WEATHER STATION

METEOROLOGICAL CONSULTING * WEATHER FORECASTING and ANALYSIS

PHONE 1-877-44-SNOWY...that is 1-877-447-6699

UTILITY FORECAST FOR: SMITH UTILITY COMPANY

FORECAST TIME: 8:00 AM FORECAST DATE: 5-Apr-07

FORECASTER: DAN VENTOLA

DAY 1-THURSDAY (5-APR-07)

Time	1	2	3	4	5	6	7	8	9
	13	14	15	16	17	18	19	20	21
T (F)	62	61	60	59	58	57	57	59	60
	73	75	76	77	77	76	73	72	70
Td (F)	59	58	57	56	56	55	55	56	59
	60	60	61	62	62	62	61	60	59
Wd	24	24	23	23	23	24	24	25	26
	25	26	27	27	28	29	28	26	25
Ws	10	10	10	11	12	13	15	13	12
	8	7	6	5	5	6	7	8	9
%C	20	20	20	20	20	20	30	40	50
	90	90	90	80	60	50	40	30	30
%P	0	0	0	0	0	0	10	10	30
	60	60	60	30	20	10	10	0	0
P acc (in)	0	0	0	0	0	0	0	0.05	0.05
	0.25	0.2	0.2	0.1	0	0	0	0	0
HDD	CDD		HIGH		LOW				
12	n/a		77		57				
% HDD	%CCD								
25%	n/a								

DAY 2-FRIDAY (6-APR-07)

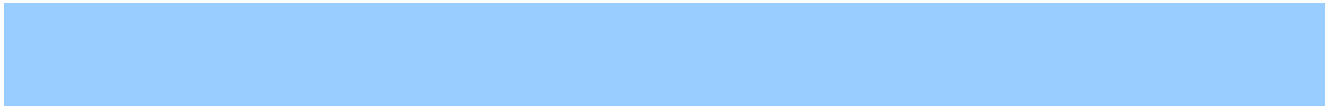
Time	1	2	3	4	5	6	7	8	9
	13	14	15	16	17	18	19	20	21
T (F)	62	61	60	59	58	57	57	59	60
	73	75	76	77	77	76	73	72	70
Td (F)	59	58	57	56	56	55	55	56	59
	60	60	61	62	62	62	61	60	59
Wd	24	24	23	23	23	24	24	25	26
	25	26	27	27	28	29	28	26	25
Ws	10	10	10	11	12	13	15	13	12
	8	7	6	5	5	6	7	8	9
%C	20	20	20	20	20	20	30	40	50
	90	90	90	80	60	50	40	30	30

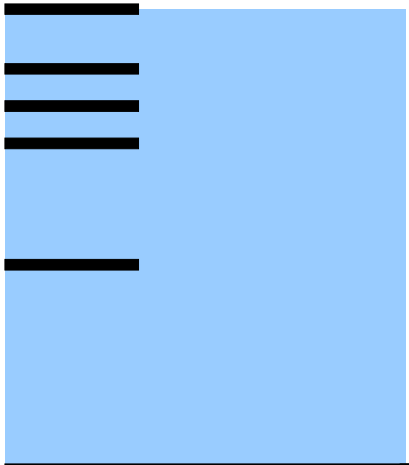
%P	0	0	0	0	0	0	10	10	30
	60	60	60	30	20	10	10	0	0
P acc (in)	0	0	0	0	0	0	0	0.05	0.05
	0.25	0.2	0.2	0.1	0	0	0	0	0
HDD	CDD		HIGH		LOW				
12	n/a		77		57				
% HDD	%CCD								
25%	n/a								

DAY 3-SATURDAY (7-APR-07)									
Time	1	2	3	4	5	6	7	8	9
	13	14	15	16	17	18	19	20	21
T (F)	62	61	60	59	58	57	57	59	60
	73	75	76	77	77	76	73	72	70
Td (F)	59	58	57	56	56	55	55	56	59
	60	60	61	62	62	62	61	60	59
Wd	24	24	23	23	23	24	24	25	26
	25	26	27	27	28	29	28	26	25
Ws	10	10	10	11	12	13	15	13	12
	8	7	6	5	5	6	7	8	9
%C	20	20	20	20	20	20	30	40	50
	90	90	90	80	60	50	40	30	30
%P	0	0	0	0	0	0	10	10	30
	60	60	60	30	20	10	10	0	0
P acc (in)	0	0	0	0	0	0	0	0.05	0.05
	0.25	0.2	0.2	0.1	0	0	0	0	0
HDD	CDD		HIGH		LOW				
12	n/a		77		57				
% HDD	%CCD								
25%	n/a								

SHORT TERM SUMMARY:

Write in Short term summary here.





10	11	12
22	23	24
62	67	70
68	67	62
60	61	60
58	57	56
26	27	28
24	23	22
11	8	9
12	14	15
70	90	90
20	10	10
40	60	60
0	0	0
0.05	0.1	0.25
0	0	0

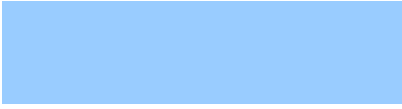


10	11	12
22	23	24
62	67	70
68	67	62
60	61	60
58	57	56
26	27	28
24	23	22
11	8	9
12	14	15
70	90	90
20	10	10

40	60	60
0	0	0
0.05	0.1	0.25
0	0	0

10	11	12
22	23	24
62	67	70
68	67	62
60	61	60
58	57	56
26	27	28
24	23	22
11	8	9
12	14	15
70	90	90
20	10	10
40	60	60
0	0	0
0.05	0.1	0.25
0	0	0





DAY 4-SUNDAY (8-APR-07)

Time	1	2	3	4	5	6	7	8	9
	13	14	15	16	17	18	19	20	21
T (F)	62	61	60	59	58	57	57	59	60
	73	75	76	77	77	76	73	72	70
Td (F)	59	58	57	56	56	55	55	56	59
	60	60	61	62	62	62	61	60	59
Wd	24	24	23	23	23	24	24	25	26
	25	26	27	27	28	29	28	26	25
Ws	10	10	10	11	12	13	15	13	12
	8	7	6	5	5	6	7	8	9
%C	20	20	20	20	20	20	30	40	50
	90	90	90	80	60	50	40	30	30
%P	0	0	0	0	0	0	10	10	30
	60	60	60	30	20	10	10	0	0
P acc (in)	0	0	0	0	0	0	0	0.05	0.05
	0.25	0.2	0.2	0.1	0	0	0	0	0
HDD	CDD		HIGH		LOW				
12	n/a		77		57				
% HDD	%CCD								
25%	n/a								

DAY 5-MONDAY (9-APR-07)

Time	1	2	3	4	5	6	7	8	9
	13	14	15	16	17	18	19	20	21
T (F)	62	61	60	59	58	57	57	59	60
	73	75	76	77	77	76	73	72	70
Td (F)	59	58	57	56	56	55	55	56	59
	60	60	61	62	62	62	61	60	59
Wd	24	24	23	23	23	24	24	25	26
	25	26	27	27	28	29	28	26	25
Ws	10	10	10	11	12	13	15	13	12
	8	7	6	5	5	6	7	8	9
%C	20	20	20	20	20	20	30	40	50
	90	90	90	80	60	50	40	30	30
%P	0	0	0	0	0	0	10	10	30
	60	60	60	30	20	10	10	0	0
P acc (in)	0	0	0	0	0	0	0	0.05	0.05
	0.25	0.2	0.2	0.1	0	0	0	0	0
HDD	CDD		HIGH		LOW				
12	n/a		77		57				
% HDD	%CCD								
25%	n/a								

DAY 6-TUESDAY (10-APR-07)

Time	1	2	3	4	5	6	7	8	9
	13	14	15	16	17	18	19	20	21
T (F)	62	61	60	59	58	57	57	59	60
	73	75	76	77	77	76	73	72	70
Td (F)	59	58	57	56	56	55	55	56	59
	60	60	61	62	62	62	61	60	59
Wd	24	24	23	23	23	24	24	25	26
	25	26	27	27	28	29	28	26	25
Ws	10	10	10	11	12	13	15	13	12
	8	7	6	5	5	6	7	8	9
%C	20	20	20	20	20	20	30	40	50
	90	90	90	80	60	50	40	30	30
%P	0	0	0	0	0	0	10	10	30
	60	60	60	30	20	10	10	0	0
P acc (in)	0	0	0	0	0	0	0	0.05	0.05
	0.25	0.2	0.2	0.1	0	0	0	0	0
HDD	CDD		HIGH		LOW				
	12		n/a		77		57		

% HDD	% CCD
25%	n/a

DAY 7-WEDNESDAY (11-APR-07)

Time	1	2	3	4	5	6	7	8	9
	13	14	15	16	17	18	19	20	21
T (F)	62	61	60	59	58	57	57	59	60
	73	75	76	77	77	76	73	72	70
Td (F)	59	58	57	56	56	55	55	56	59
	60	60	61	62	62	62	61	60	59
Wd	24	24	23	23	23	24	24	25	26
	25	26	27	27	28	29	28	26	25
Ws	10	10	10	11	12	13	15	13	12
	8	7	6	5	5	6	7	8	9
%C	20	20	20	20	20	20	30	40	50
	90	90	90	80	60	50	40	30	30
%P	0	0	0	0	0	0	10	10	30
	60	60	60	30	20	10	10	0	0
P acc (in)	0	0	0	0	0	0	0	0.05	0.05
	0.25	0.2	0.2	0.1	0	0	0	0	0
HDD	CDD		HIGH		LOW				
	12		n/a		77		57		

% HDD	% CCD
25%	n/a

MEDIUM TERM SUMMARY:

Write in Short term summary here.

10	11	12
22	23	24
62	67	70
68	67	62
60	61	60
58	57	56
26	27	28
24	23	22
11	8	9
12	14	15
70	90	90
20	10	10
40	60	60
0	0	0
0.05	0.1	0.25
0	0	0

10	11	12
22	23	24
62	67	70
68	67	62
60	61	60
58	57	56
26	27	28
24	23	22
11	8	9
12	14	15
70	90	90
20	10	10
40	60	60
0	0	0
0.05	0.1	0.25
0	0	0

10	11	12
22	23	24
62	67	70
68	67	62
60	61	60
58	57	56
26	27	28
24	23	22
11	8	9
12	14	15
70	90	90
20	10	10
40	60	60
0	0	0
0.05	0.1	0.25
0	0	0

10	11	12
22	23	24
62	67	70
68	67	62
60	61	60
58	57	56
26	27	28
24	23	22
11	8	9
12	14	15
70	90	90
20	10	10
40	60	60
0	0	0
0.05	0.1	0.25
0	0	0





	HDD	%HDD
12:00 AM	13	
55	CDD	%CDD
45	n/a	

	HDD	%HDD
12:00 AM	13	
55	CDD	%CDD
45	n/a	

	HDD	%HDD
12:00 AM	13	
55	CDD	%CDD
45	n/a	

	HDD	%HDD
12:00 AM	13	
55	CDD	%CDD
45	n/a	

	HDD	%HDD
12:00 AM	13	
55	CDD	%CDD
45	n/a	

	HDD	%HDD
12:00 AM	13	
55	CDD	%CDD
45	n/a	

	HDD	%HDD
12:00 AM	13	
55	CDD	%CDD
45	n/a	

	HDD	%HDD
12:00 AM	13	
55	CDD	%CDD
45	n/a	

29-Apr	30-Apr
91	89
68	70

Severe Weather Forecast

FORECAST VALID AS OF: 8:00 AM Wednesday 4/3/2007

CONTINUES UNTIL: 1:00 PM Thursday 4/4/2007

Severe Weather Categories:



Strong Winds	
Starting Time:	1AM-4AM THURSDAY
Ending Time:	10AM-12PM THURSDAY
Sustained Wind Speed:	25KT-40KT
Highest Potential Gusts:	45KT-50KT
Wind Direction:	Southwest
Forecast Confidence:	Moderate



Thunderstorms	
Starting Time:	1AM-4AM THURSDAY
Ending Time:	10AM-12PM THURSDAY
Worst Conditions Between:	6AM-8AM THURSDAY
Storm Weather:	Gusty Winds, Hail, Heavy Downpours
Forecast Confidence:	Low



Heavy Rain	
Starting Time:	1AM-4AM THURSDAY
Ending Time:	10AM-12PM THURSDAY
Worst Conditions Between:	6AM-8AM THURSDAY
Precipitation Amounts (in)	.80"-1.20"
Forecast Confidence:	Moderate-High

Additional Comments:

Put in additional comments here.

